

# Big Design for Small Workspaces

Edited by Kenny Kinugasa-Tsui

Arch. Silvia  
Stella  
Galimberti

## The Lawyer Office

Client  
Gratteri Law Firm

Location  
Rome, Italy  
Area  
3229 square feet (300 square  
meters)  
Completion date  
2015  
Photography  
Marco Schichilone





1-2 Meeting room

The Lawyer Office is located in a building from 1800 in the Prati area, known as the legal district in Rome. The client had two basic requests that have been met: a space that could be formal and professional, and also warm and comfortable. The result is a space that, as a house, encourages social interactions and reflects the client's love for art.

The design concept was driven by these indications, creating spaces where classic art, contemporary art and industrial design are merged together in functional wide rooms, placed according to the multiple activities of the studio.

The office environment is animated by enclosed spaces alternating with open spaces. The floor plan has a regular structure due to the

construction typology of its building period. Within some rooms, it was possible to preserve and restore the ancient polychrome graniglia floors, as well as the stucco ceilings with floral motifs.

The color palette of the walls and furniture goes from taupe to grey tone, while orange is added for the details of furniture, creating a stylish and contemporary contrast. The core of the project is the meeting room where a customized table of 8.2 feet (2.5 meters) in diameter is placed in the center. The whole room is a balance of harmony between tradition and innovation: the busts of Athena and Antinous faced the Aldo Chaparro aluminum diptych; the stucco ceiling with floral pattern interacts with the lighting system of suspension cables and



Meeting room cross-section plan

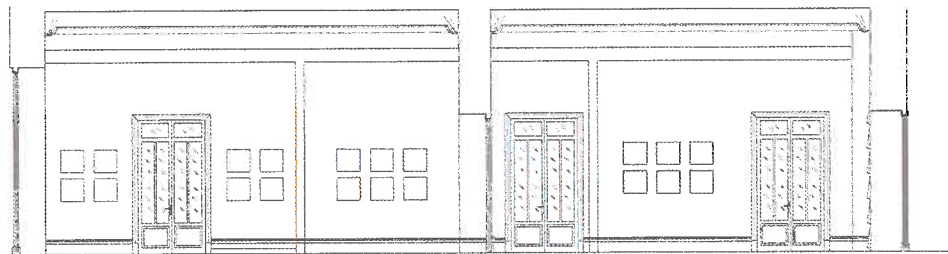


light cones; the library, which stores a collection of 17th-century books, also supports wireless devices.

The main materials used throughout the space are lacquered wood and marble. Particularly, the precious type of marble "Pulpis" is used to create the custom lobby desk, designed as a diamond-cut geometric element, handmade by skilled craftsmen with a long tradition in the field of stone processing. A gallery wall features a series of photographs portraying the Roman juriconsults and ends with a huge steel sculpture from the art gallery Spazio Nuovo.

3 | 4  
5 | 6

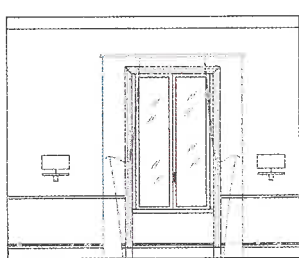
Design presentation board



Gallery



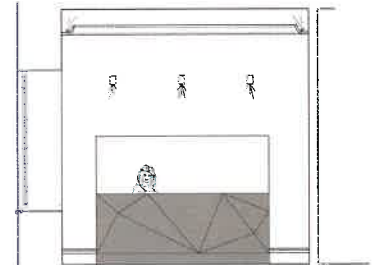
Aldo Chaparro



Meeting room



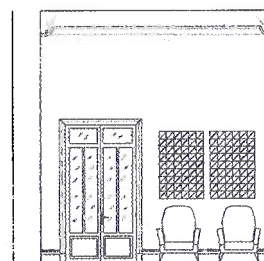
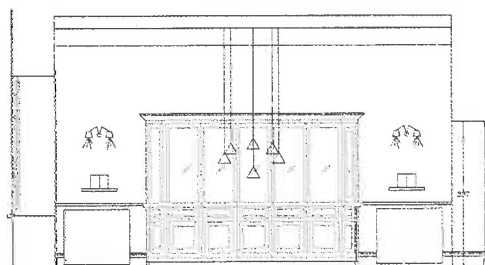
Lighting from Flos



Marble desk



Camilla Borghese



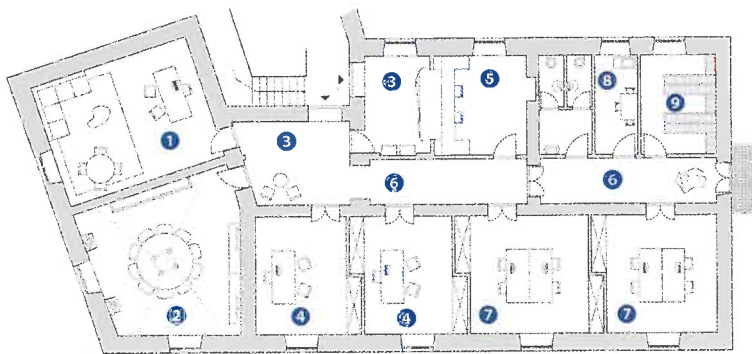
Lobby



Chair from Vitra



- 3 Lobby dominated by light and dark marble
- 4 Plaster-bust reproduction of the original Antinoo Capitolino from the Museo Capitolino Romano in meeting room
- 5 Steel sculpture by Aldo Chaparro
- 6 Plaster-bust reproduction of the original Arena di Arles from the original of Prassitele; "Dove Tale" wall paint from Farrow & Ball



**Floor plan**

- 1 Principal office
- 2 Meeting room
- 3 Lobby
- 4 Associate office
- 5 Reception
- 6 Gallery
- 7 Office
- 8 Kitchen
- 9 Archive

- 7 Principal's office
- 8 Library storing a collection of 17th-century books in meeting room
- 9 “Giureconsulti,” by architect Silvia Stella Galimberti, is a series of photos that depict statues of Roman jurisconsults standing on the facade of Palazzo di Giustizia in Rome. The gallery ends with Aldo Chaparro's sculpture that characterizes the space with the order/disorder of its presence
- 10 Upholstered stools have a fine orange textile detail; digital photograph is from the series “The Lawyer Net” by Galimberti and depicts the Palazzo di Giustizia built in 1889
- 11 Clean lines and minimalism characterize this project and allow design elements to stand out; a multifaced mirror enhances light and views



7 | 9  
8 | 10 11